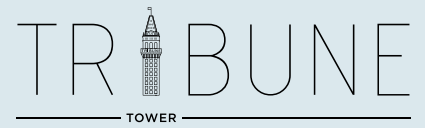


# HYPOTHETICAL FLOOR PLANS\*



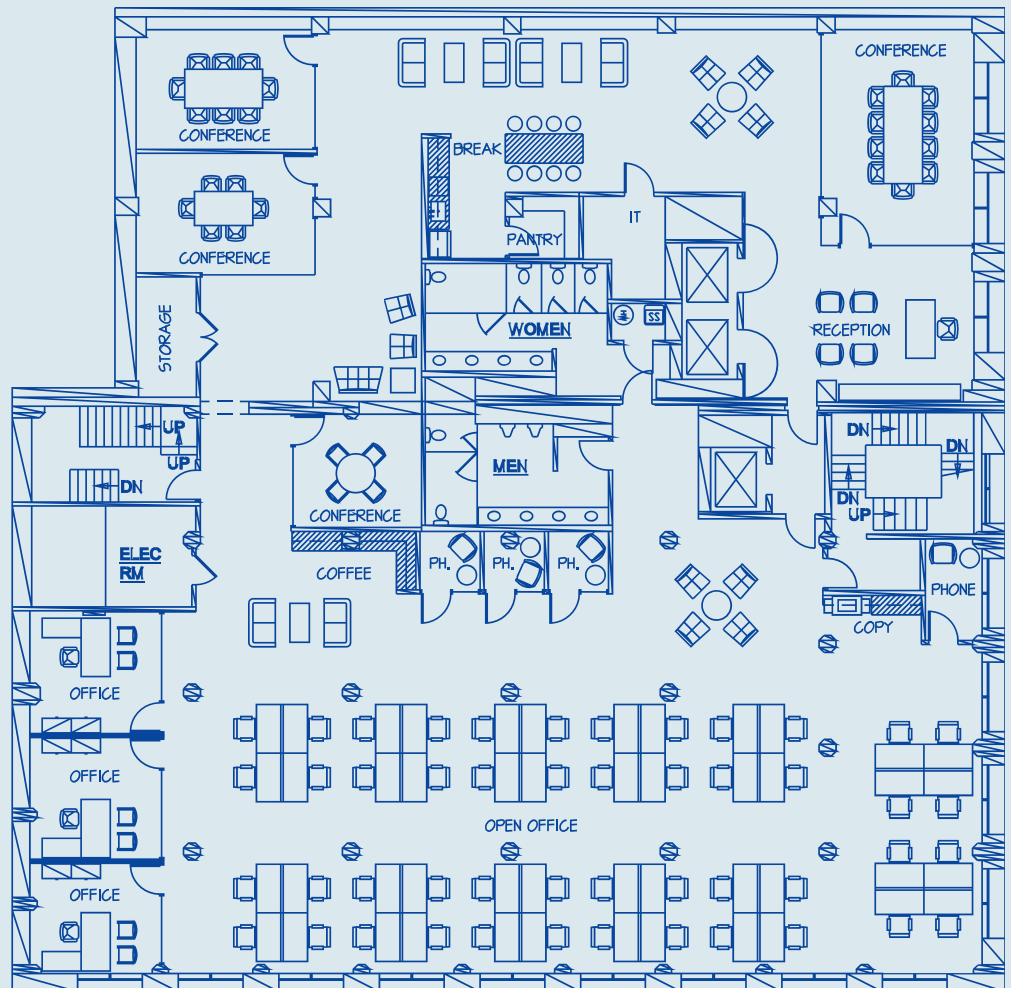
Full floor plan for floors 2, 3 and 5.

2<sup>nd</sup> Floor: ±10,313 SF

3<sup>rd</sup> Floor: ±10,313 SF

5<sup>th</sup> Floor: ±10,292 SF

\*Available Now



## TRIBTOWER.COM

### JOHN DOLBY

Executive Director  
+1 510 267 6027  
john.dolby@cushwake.com  
LIC #00870630

### DANE HOOKS

Managing Director  
+1 510 267 6025  
dane.hooks@cushwake.com  
LIC #01900402

©2017 Cushman & Wakefield. NO WARRANTY OR REPRESENTATION, EXPRESS OR IMPLIED, IS MADE TO THE ACCURACY OR COMPLETENESS OF THE INFORMATION CONTAINED HEREIN, AND SAME IS SUBMITTED SUBJECT TO ERRORS, OMISSIONS, CHANGE OF PRICE, RENTAL OR OTHER CONDITIONS, WITHDRAWAL WITHOUT NOTICE, AND TO ANY SPECIAL LISTING CONDITIONS IMPOSED BY THE PROPERTY OWNER(S). AS APPLICABLE, WE MAKE NO REPRESENTATION AS TO THE CONDITION OF THE PROPERTY (OR PROPERTIES) IN QUESTION.

